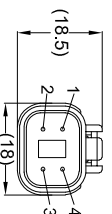


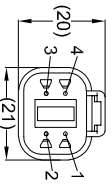
# VIEW C



4 PIN FEMALE MATING FACE

PIN	WIRE COLOUR	DESCRIPTION
1	BROWN	GND
2	GREEN	CAN HIGH
3	YELLOW	+12V
4	BLUE	CAN LOW

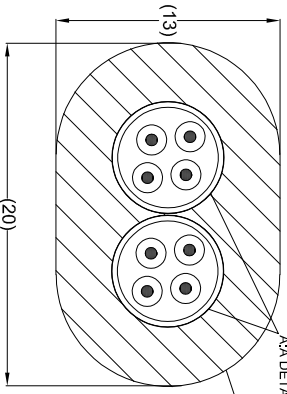
# VIEW D



4 PIN MALE MATING FACE

PIN	WIRE COLOUR	DESCRIPTION
1	BROWN	GND
2	GREEN	CAN HIGH
3	YELLOW	+12V
4	BLUE	CAN LOW

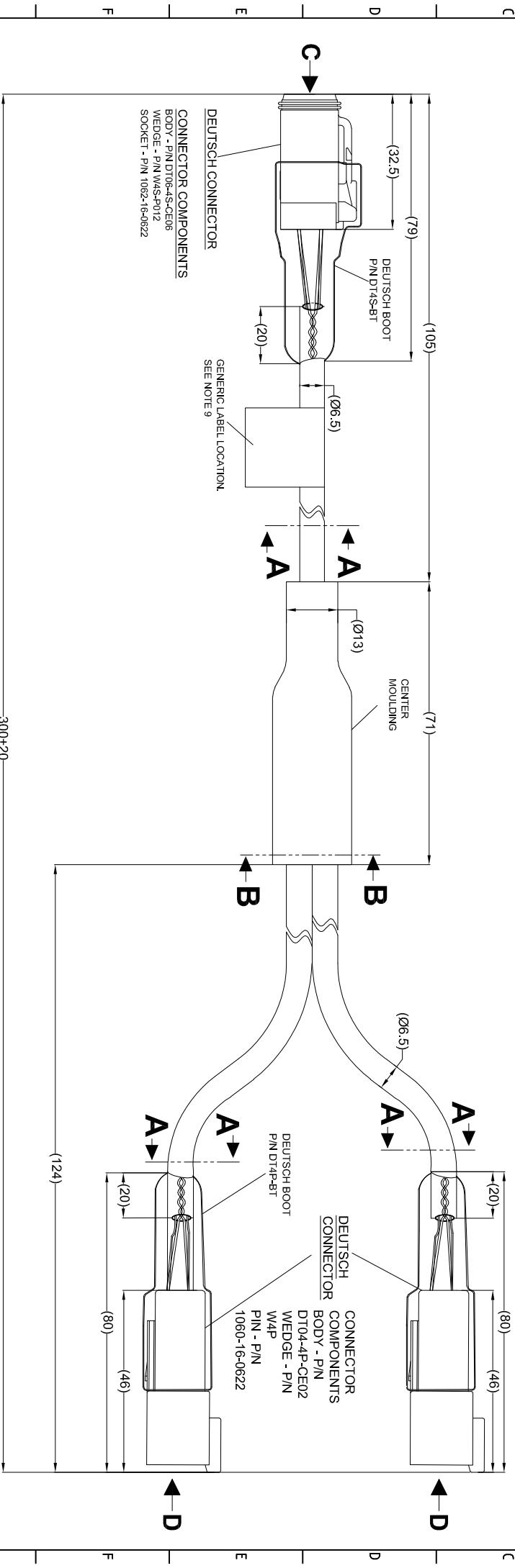
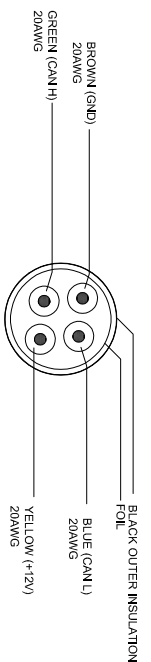
## SECTION B-B



CABLE BUILD UP  
AS PER SECTION  
A-A DETAIL

CENTER  
Moulding

## SECTION A-A



### CONNECTOR COMPONENTS

BODY - P/N DT06-4S-CE06  
WEDGE - P/N W4S-P012  
SOCKET - P/N 1062-16-0622

GENERIC LABEL LOCATION.  
SEE NOTE 9

CONNECTOR COMPONENTS  
BODY - P/N  
DT04-4P-CE02  
WEDGE - P/N  
W4P  
PIN - P/N  
1060-16-0622

### NOTES:

1. CABLES MUST BE ONE CONTINUOUS LENGTH BETWEEN CONNECTORS AND CENTER Moulding.
2. CONNECTOR BODY COLOUR MUST BE BLACK. BOOT COLOUR MUST BE GREY.
3. BLUE (CAN LOW) AND GREEN (CAN HIGH) WIRES TO BE TWISTED TOGETHER THROUGHOUT THE LENGTH OF THE CABLE.
4. TWISTED PAIR TWIST RATE IS 1 TURN PER 50-55MM.
5. BOOTS MUST BE A TIGHT FIT ON THE CABLE. BOOT MATERIAL STRETCHES TO CLAMP BY TENSION ON THE CABLE.
6. THE OUTSIDE CABLE INSULATION MUST BE PRESENT FOR A MINIMUM OF 20MM WITHIN THE BOOT.
7. ANY CUSTOMER MODIFICATION OF THIS PRODUCT CAUSING SUBSEQUENT FAILURE IS NOT A LIABILITY OF BRIGADE ELECTRONICS PLC.
8. FOR PACKAGING & LABELING DETAIL REFER TO THE LATEST VERSION OF THE MASTER BOM.
9. GENERIC LABEL LOCATION IS NOT FIXED AND MAY VARY ALONG THE LENGTH OF THE CABLE BETWEEN DEUTSCH PLUG AND CENTER Moulding.

### PROPRIETARY NOTICE

THIS DESIGN AND TECHNICAL INFORMATION APPEARING ON THIS DRAWING IS THE PROPERTY OF BRIGADE ELECTRONICS, AND IS DISCLOSED IN CONFIDENCE. IT IS NOT TO BE COPIED, REPRODUCED, REVEALED TO OR EXPLOITED BY OTHERS, EITHER IN WHOLE OR IN PART WITHOUT THE EXPRESS WRITTEN CONSENT OF BRIGADE ELECTRONICS.

Revision Notes			
AP.A. -	Drawn -	Checked -	Approved -



Angle of Projection	Third Angle
Assembly PI Approval Sandy Wu	Approved by B. Childs
Units mm	Scale N/A
Status RELEASED	Released 03/10/17
Part No 5270	Assembly Ref -
	Checked by D. Richardson
	Released 03/10/17
	Drawn by R. Williams
	Assembly Ref BS-00NYC
	Released 03/10/17
	Part No BE-003577-00-17